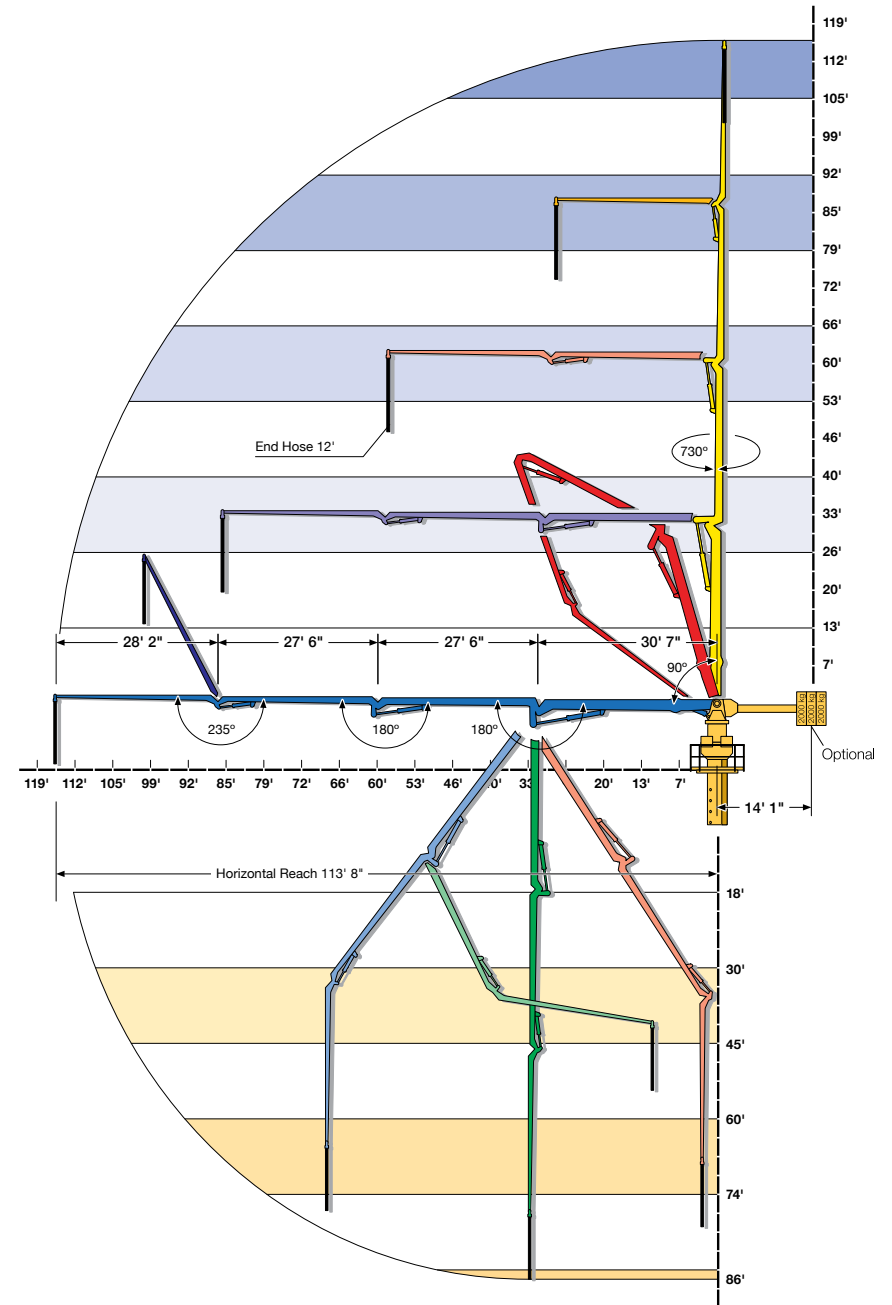


SPB 35

SPECIFICATIONS

	U.S.	Metric
Vertical Reach	113' 8"	35 m
Horizontal Reach	113' 8"	35 m
Below Grade Reach w/ Tip Hose	95' 1"	29 m
Pipeline Diameter	5"	125 mm
Boom Type / Sections	Full Articulation, Roll & Fold® / 4	
Boom Rotation	730 degrees	
Max. Free Standing Height on Octagonal Mast	59'	18 m
Picking Weight: Powerpack	18,750 lbs	8,505 kg
Picking Weight: Boom	12,850 lbs	5,829 kg



SCHWING®