

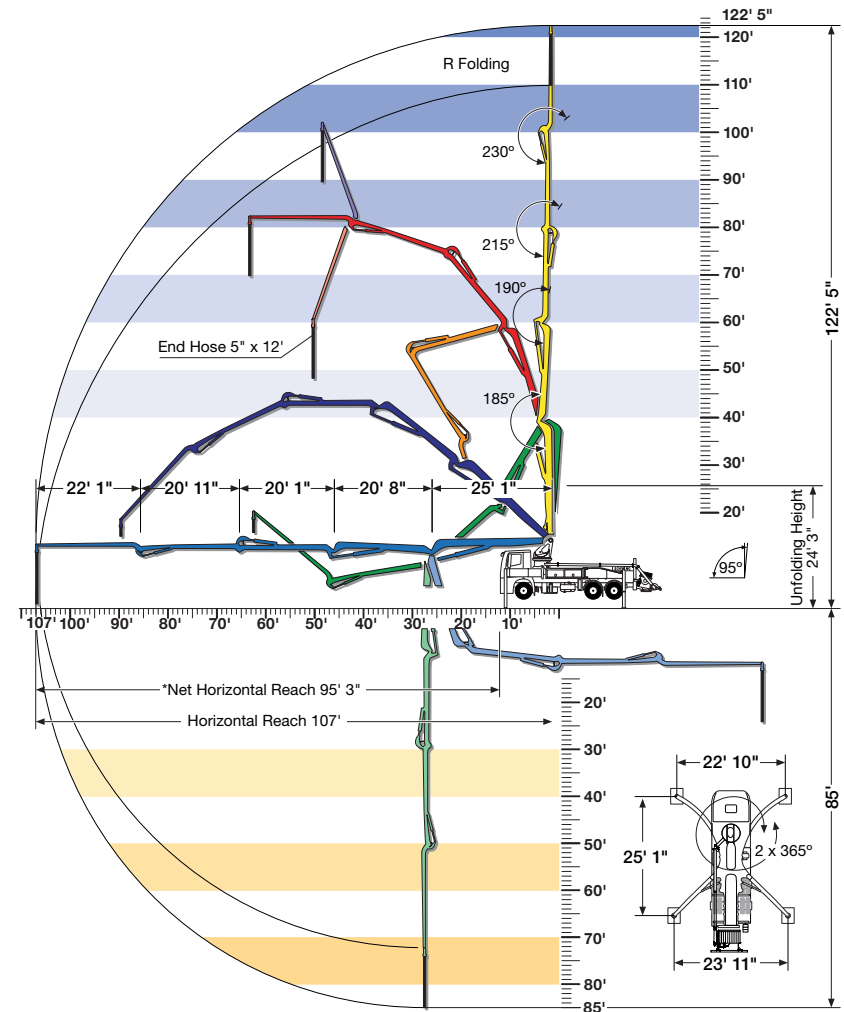
S 38 SX

SPECIFICATIONS

	U.S.	Metric
Vertical Reach	122' 5"	37.3 m
Horizontal Reach	107'	32.6 m
Below Grade Reach w/ Tip Hose	85'	25.9 m
Pipeline Diameter	5"	125 mm
Boom Type / Sections	Hyper Extension / 5	
Boom Rotation	730 degrees	
Unfolding Height	24' 3"	7.4 m
Outrigger Type - Front	Super X Outriggers, Fully Hydraulic, Extension & Jacking	
Outrigger Type - Rear	Hydraulic Extension & Jacking	
Outrigger Soil Pressure w/o Dunnage (front/rear)	626/359 psi	43.2/24.8 bar
Outrigger Soil Pressure w/ Dunnage (front/rear)	78/82 psi	5.4/5.7 bar
Outrigger Width - Front	22' 10"	6.9 m
Outrigger Width - Rear	23' 11"	7.3 m
Outrigger Length	25' 1"	7.6 m

PUMP SPECIFICATIONS

	2525H-6 120/85 MPS with Big Rock™		2023-5 110/75 MPS with M Rock	
	U.S.	Metric	U.S.	Metric
Theor. Concrete Output	213 cu yds/h	163 cu m/h	179 cu yds/h	137 cu m/h
Max. Pressure on Concrete	1169 psi	81 bar	1094 psi	75 bar
Max. Strokes Per Minute	22		27	
Max. Aggregate Size	2.5"	63.5 mm	2.5"	63.5 mm
Material Cylinder Diameter	10"	254 mm	9"	230 mm
Material Cylinder Stroke	98"	2500 mm	79"	2000 mm
Differential Cylinder Diameter	4.7"	120 mm	4.3"	110 mm
Maximum Oil Flow	158.5 gal/min	600 l/min	132.1 gal/min	500 l/min
Hydraulic Circuitry Type	MPS		MPS	
Valve Type	B Rock		M Rock	



*Pump specifications are for standard units. Other units are available. Specifications are subject to change without prior notice.